



Gaskell Primary School Newsletter

Please follow all the amazing work we do at our school on twitter [@GaskellPrimary](https://twitter.com/GaskellPrimary)

Friday 14th January 2022

Gaskell Primary School

Weekly news...



What another fantastic week of learning [@GaskellPrimary](#).

Class 5P enjoyed a lovely morning walking along the Bolton to Manchester canal on Wednesday, stopping to look at the River Irwell. They even managed to spot a Heron and a wild Mink. Take a look at what they got up to....









COVID-19 cases are currently high in Bolton. If you or a member of your immediate family has COVID symptoms, please keep your child off school until you receive a COVID test result. Just a reminder that if your child tests positive for COVID-19, please ring the school office immediately. If the office is closed, we would be grateful if you could email to let us know at parent@gaskell.bolton.sch.uk as soon as possible.

*Make sure your child is in school everyday. If your child misses just one day, it can have a huge impact on their learning. Take a look at the **attendance ladder** below.*



Have a lovely weekend and remember to stay safe.

Miss Barlow

*This week's House Point winners are **BANKSY**! Well done to them.*



Please continue reading to find out more about:

- *This Week's Winners*

- *Attendance*

- *Reading*

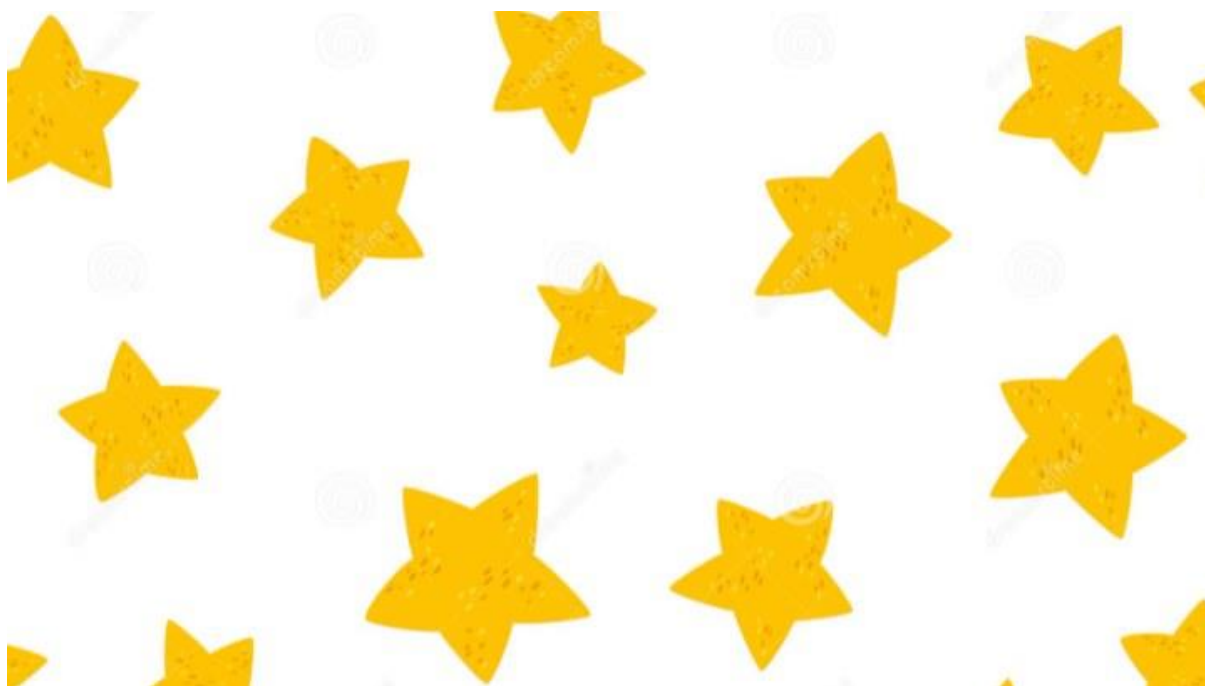
- *This Week's Learning*

- *SEESAW*

- *Parent APP*

- *Important Information*

Stars of the Week



★ This Week's Stars ★			
Teacher	Winner	Teacher	Winner
Mrs Holland (AM)	Ella	Miss Valli	Ataka
Mrs Holland (PM)	Maati	Miss Varey	Muhammad
Mrs Blakemore	Habbiy	Mr Hawke	Safa
Mrs Bertenshaw	Hamza	Miss Latham	Ibaad
Mrs Sewell	Mohga	Miss Young	Jamal
Miss Mercer	Shariyar	Miss Percival	Tasnim & Hammad
Miss Langton	Mohammed M	Mr Fogg	Kayleigh
Miss Hughes	Jana	Miss Andrews	Elmi
Miss Thistlethwaite	Inaya	Miss O'Donnell	Hollie

Please click on the table above to see this week's stars.

Attendance



*It is extremely important that your child attends school every day. If your child is unwell please phone the school office before 9am. As a school we need to have at least **97%** of children attending school everyday! This week's whole school attendance is **94%**.*

The KS1 winners are 1M with 97.3%

The KS2 winners are 4L with 98.5%

Well done to both classes. Let's see who will be next week winners...



Please make sure your child is in school everyday. We will also be having another exciting **HOTSPOT** reward, so watch this space.

Reading



Well done to Year 6, who have made brilliant progress on 'Reading Plus'. Each week, a child is chosen who has made exemplary progress and they receive a special certificate.

THIS WEEK'S YEAR 6 READING CHAMPION IS ZUNERA!

Keep your eyes peeled for some exciting Reading rewards this term.

Please encourage and support your child/ren with reading everyday, it makes such a difference!

Miss Thistlethwaite

This Week's Learning



*The children continue to impress us **ALL** every week with their learning. Take a look at this week's amazing learning across school.*















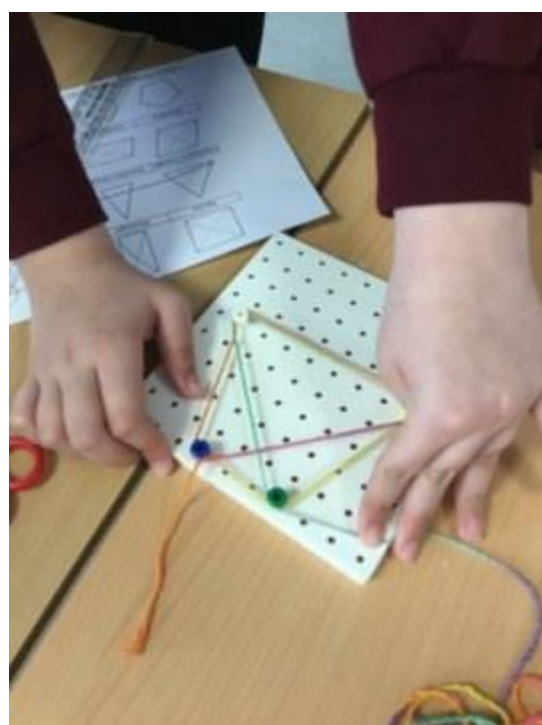






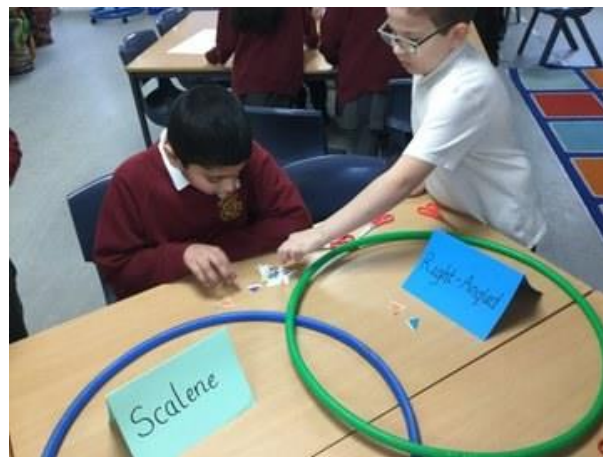






















This year we're going to use Seesaw to share our learning. Please join your class today!

If you're using Seesaw for the first time: 1. Go to app.seesaw.me.

2. Choose "I'm a Student".

3. Type in the code for your Class. This code expires on September 22, 2021.

4. Finish creating your account using your school Google account or email address.

If you've used Seesaw before and have an account: 1. Go to app.seesaw.me.

2. Choose "I'm a Student".

3. Sign in using your school Google account or email address.

4. Click on your profile icon on the top left.

5. Click on the +Join Class button.

6. Type in the code for your Class. This code expires on 20th January 2022.

I'm excited to share our learning in Seesaw this year!

Miss Andrews



ALL communication about your child will **NOW** be through **PARENTAPP**, so please make sure you sign up if you haven't already done so! If you have any questions or need some extra help setting it up on your phone, please call 0151 808 0093 or email support@parentapps.co.uk

Important Information



Nursery Places



Gaskell C.P. School

Thomas Holden Street
Bolton
BL1 2QG



Full and Part Time Nursery Places Available

If you are interested or know of
anyone who may be interested in a full
or part time place for their child, please
contact the School Office on 333666



Reception Intake (2022 - 23)

Reception applications for children born between **1st September 2017 - 31st August 2018** opened
online on 20th September 2021 at www.bolton.gov.uk/admissions.

The closing date is 15th January 2022. Please make sure you fill in your details ASAP as spaces will fill
up quickly. If you need any help, please speak to Mrs Bertenshaw in Reception.



Reporting a Positive COVID Test

If you or a member of your immediate family has COVID symptoms, please keep your child off school until you receive a COVID test result. Just a reminder that if your child tests positive for COVID-19, please ring the school office immediately. If the office is closed, we would be grateful if you could email to let us know at parent@gaskell.bolton.sch.uk as soon as possible.

Let's do the right thing for Bolton

If you have symptoms of COVID-19, stay at home and get tested

www.gov.uk/coronavirus

Bolton Council

Clubs - Spring Term

Monday	Before school	Y6 Chess / Dominoes
	Afterschool	Y 5/6 Netball Y2 Athletics
Tuesday	Before school	Y5 Chess / Dominoes
	Afterschool	Y3/4 Tag Rugby Y5 Forest School (after-half term) Y5/6 Cheerleading
Wednesday	Before school	Y4 Chess / Dominoes
	Afterschool	5/6 Girls Football
Thursday	Before school	Y3 Chess / Dominoes
	Afterschool	Inter and Intra School Fixtures
Friday	Afterschool	Y5/6 Girls Tag Rugby Y3/4 Quidditch

School Times

*Due to the increase in traffic outside of school, **ALL** children can be dropped off at school from **8:45 - 8:55am** through their designated entrance. Classroom doors will be open, so children can walk to their class. **Lessons will start at 8:55am (prompt)**. All classes will finish at 3:15pm and Afternoon Nursery will finish at 3:30pm. Morning Nursery will continue to finish at 11:45am.*

Important Dates

*Friday 11th February: **School closes for Half Term (3:15pm)***

Contact Us



Gaskell Primary School

Thomas Holden Street

Bolton

BL1 2QG

01204 333666

office@gaskell.bolton.sch.uk

Visit us on the web at www.gaskell.bolton.sch.uk

Follow us on twitter at [@GaskellPrimary](https://twitter.com/GaskellPrimary)



<https://sway.office.com/blig4GW9rqp8okx2#content=foulQl9Rk9lIKc>